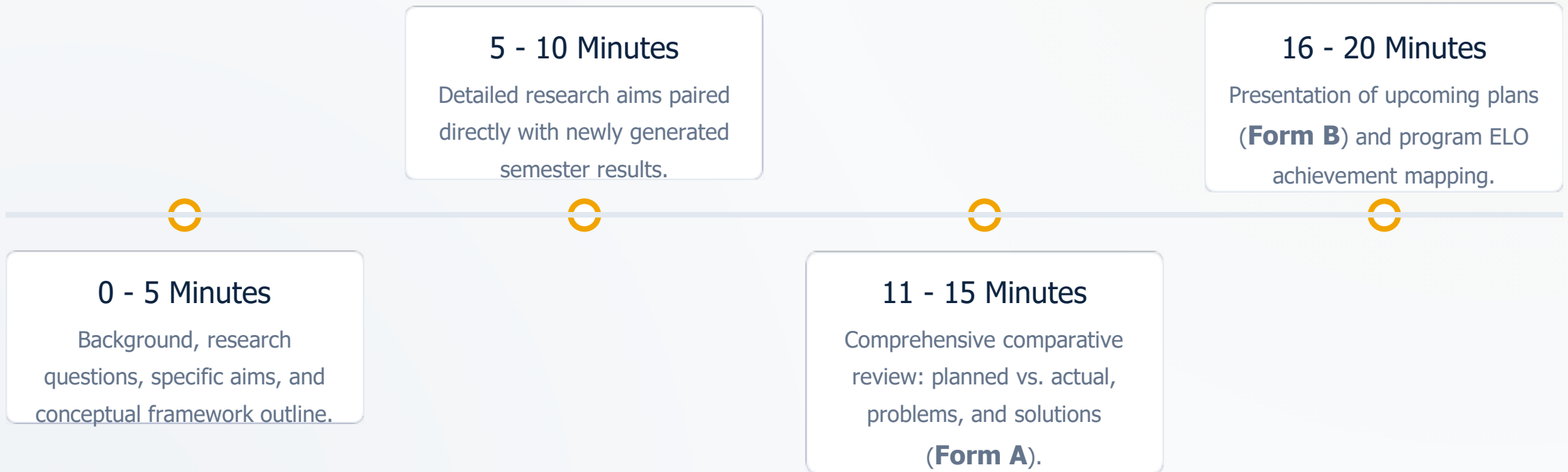


GRADUATE PROGRESS REPORT

# Academic Progress & ELO Presentation

 Department of Physiology, Faculty of Medicine Siriraj Hospital, Mahidol University

# Presentation Agenda & Timing

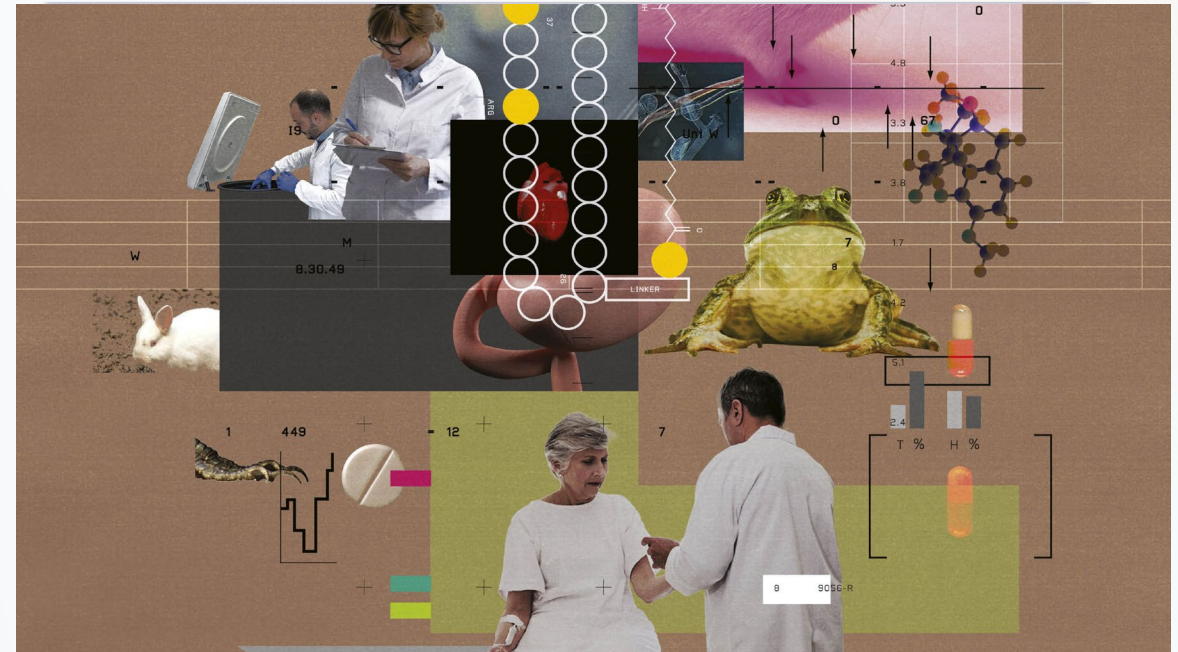


# Action Plan For Next Semester (Form B)

## Subsequent Semester Milestones

The structured roadmap to sustain dissertation momentum in Semester 2:

- **1. Coursework** (if any)
- **2. Research plan according to research questions**
  - Parts of experiment to be done
- **3. Plan for thesis writing:**
  - Chapter Background XX %
  - Chapter Methodologies XX %
  - Chapter Results XX %
- **4. Plan for conference presentation/publication:**
  - Graduate research forum
  - Annual Meeting of Physiological Society of Thailand



[https://www.physiology.org/images/default-source/tphysmag/march-2025/tpm\\_march25\\_1200x675\\_feat\\_benchtobedside\\_intro.jpg?sfvrsn=5be7a91e\\_1](https://www.physiology.org/images/default-source/tphysmag/march-2025/tpm_march25_1200x675_feat_benchtobedside_intro.jpg?sfvrsn=5be7a91e_1)

# Action Plan For Next Semester (Form B)

## Plan for semester 2

- 1- Complete presentation of SIPS601
- 2 - Recruit human subjects 50%
  - Complete real-time PCR experiment
  - Complete Western blot and ELISA experiment
- 3- 75% progress on Chapter Background of thesis
- 4- Submit abstract for International conference in USA, April 2024.

# Planned vs. Actual Progress (Form A)

Planned Target (Semester 2)	Actual Progress / Deliverable	Status	Observation & Action Taken
<b>1. SIPS601 Presentation</b>	Complete Presentation	<b>100% Complete</b>	Successfully delivered and assessed.
<b>2. - Recruit Human Subjects (50%)</b>	0 Subjects Recruited	<b>Delayed (0%)</b>	IRB protocol revisions required. Corrected and resubmitted.
<b>- PCR &amp; Blotting Experiments</b>	Real-time PCR Done; blots 50%	<b>Partially Done</b>	Delayed by antibody shortage. Reordered and expected soon.
<b>3. Thesis - Chapter Background (75%)</b>	25% of Chapter Completed	<b>Partially Done</b>	Lab-work absorbed excessive writing hours. Readjusting split.
<b>4. International Conference</b>	Abstract Submitted (USA)	<b>100% Complete</b>	Awaiting official acceptance notice for April 2027.

# Roadblocks & Solutions (Form A)

## ⚠ Identified Roadblocks

Specific variables impacting Semester 1 milestones:

- **IRB Hold-up:** Inability to initiate subject selection due to outstanding protocol corrections.
- **Reagent Deficit:** Shortage of primary beta-actin antibody halted Western Blot/ELISA completions.
- **Overallocated Lab Time:** Manual lab work limited time available for thesis writing tasks.

## ✅ Corrective Measures

Strategic workarounds deployed to maintain project velocity:

- **IRB Corrected:** Promptly compiled and uploaded protocol adjustments recommended by the board.
- **Supply Replenishment:** Dispatched priority orders; expecting immediate stock delivery next month.
- **Time Management:** Designing a rigid weekly timeline to segment bench research and active manuscript draft sessions.

# Achievement of ELO: PhD Program

Level of achievement of PhD ELO		25% or introductory achievement	50%	75%	100% or full achievement
ELO1	Analyze the different concepts, theories, hypotheses related to medical physiological field of interest.				
ELO2	Conduct extensive and independent research in medical physiology that expands the frontiers of knowledge in the field of an area of interest.				
ELO3	Criticize the research work with a detailed and leading-edge knowledge of physiology in an area of interest.				
ELO4	Disseminate new insights of medical physiology to peers and the scientific community at international level.				

# Ph.D. Expected Learning Outcomes

**ELO 1**

**Developing**

Analyze concepts, theories, and hypotheses related to medical physiological fields of interest.



**ELO 2**

**Advanced**

Conduct extensive and independent research that expands frontiers of knowledge in physiological sciences.



**ELO 3**

**Mastery**

Criticize research work with a detailed, leading-edge knowledge of physiology in specialized areas.



**ELO 4**

**Developing**

Disseminate new insights of medical physiology to peers and scientific communities at international levels.



## Achievement of ELO: MSc Program

Level of achievement of MSc ELO		25% or introductory achievement	50%	75%	100% or full achievement
ELO1	Demonstrate the current medical physiological knowledge for common clinical application.				
ELO2	Evaluate the scientific research and major research developments.				
ELO3	Perform medical physiology research with a technique in an ethical way to test an idea or hypothesis in an area of interest.				
ELO4	Communicate knowledge and ideas of medical physiological research clearly to peers and the scientific community at national level.				

# M.Sc. Expected Learning Outcomes

**ELO 1**

## Introductory

Demonstrate the current medical physiological knowledge for common clinical application.



**ELO 2**

## Developing

Evaluate scientific research paradigms and navigate major contemporary research developments.



**ELO 3**

## Advanced

Perform medical physiology research with a technique in an ethical way to test an idea/hypothesis.



**ELO 4**

## Mastery

Communicate physiological research clearly to peers and scientific communities at national levels.



# Driving Scientific Frontiers

We strive to foster groundbreaking clinical application, strict academic ethics, and global academic dialogue within the Department of Physiology, Faculty of Medicine Siriraj Hospital.

# Questions & Feedback

Thank you for your time and guidance.

---

 [physiology.siriraj.mahidol.ac.th](mailto:physiology.siriraj.mahidol.ac.th)